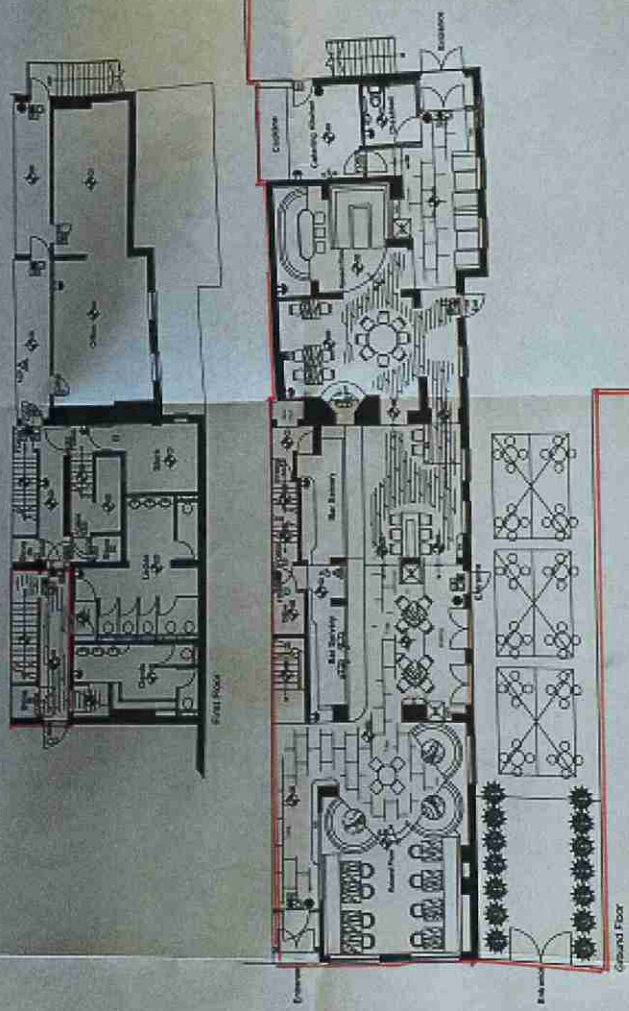


THIS DRAWING AND HEREIN ARE ALL THE PROPERTY OF SODA LTD. ANY REPRODUCTION OR TRANSMISSION IN ANY FORM OR BY ANY MEANS WITHOUT THE WRITTEN PERMISSION OF SODA LTD. IS STRICTLY PROHIBITED. THE DRAWING MUST BE KEPT IN A SAFE PLACE AND NOT BE LOANED, REPRODUCED, COPIED, OR IN ANY MANNER MADE AVAILABLE TO ANY OTHER PERSONS. THE DRAWING MUST BE KEPT IN A SAFE PLACE AND NOT BE LOANED, REPRODUCED, COPIED, OR IN ANY MANNER MADE AVAILABLE TO ANY OTHER PERSONS.



- 1. To provide a detailed plan of the premises for the purpose of the Licensing Act 2003.
- 2. To show the layout of the premises, including the location of the bar, kitchen, and dining area.
- 3. To show the location of the entrance and exit doors.
- 4. To show the location of the stairs and lifts.
- 5. To show the location of the fire exits.
- 6. To show the location of the fire alarm system.
- 7. To show the location of the fire extinguishers.
- 8. To show the location of the fire escape routes.
- 9. To show the location of the fire safety equipment.
- 10. To show the location of the fire safety signs.
- 11. To show the location of the fire safety notices.
- 12. To show the location of the fire safety instructions.
- 13. To show the location of the fire safety procedures.
- 14. To show the location of the fire safety training.
- 15. To show the location of the fire safety drills.
- 16. To show the location of the fire safety exercises.
- 17. To show the location of the fire safety tests.
- 18. To show the location of the fire safety checks.
- 19. To show the location of the fire safety audits.
- 20. To show the location of the fire safety reviews.

- 1. To provide a detailed plan of the premises for the purpose of the Licensing Act 2003.
- 2. To show the layout of the premises, including the location of the bar, kitchen, and dining area.
- 3. To show the location of the entrance and exit doors.
- 4. To show the location of the stairs and lifts.
- 5. To show the location of the fire exits.
- 6. To show the location of the fire alarm system.
- 7. To show the location of the fire extinguishers.
- 8. To show the location of the fire escape routes.
- 9. To show the location of the fire safety equipment.
- 10. To show the location of the fire safety signs.
- 11. To show the location of the fire safety notices.
- 12. To show the location of the fire safety instructions.
- 13. To show the location of the fire safety procedures.
- 14. To show the location of the fire safety training.
- 15. To show the location of the fire safety drills.
- 16. To show the location of the fire safety exercises.
- 17. To show the location of the fire safety tests.
- 18. To show the location of the fire safety checks.
- 19. To show the location of the fire safety audits.
- 20. To show the location of the fire safety reviews.

EXTERNAL AREA EXISTING SITE PLAN (NOT TO SCALE)

EDA- 4961 sq. ft
External Covers- 48 seated

